

SENT TO LSU AGCENTER/LOUISIANA FOREST PRODUCTS DEVELOPMENT CENTER - FOREST SECTOR / FORESTY PRODUCTS INTEREST GROUP

BUILDING DESIGN + CONSTRUCTION

OFFICE BUILDINGS

Walmart's new Home Office is the largest mass timber campus project in the U.S.

The project will occupy approximately 350 acres.

BY DAVID MALONE, MANAGING EDITOR | SEPTEMBER 29, 2021



Renderings courtesy Gensler

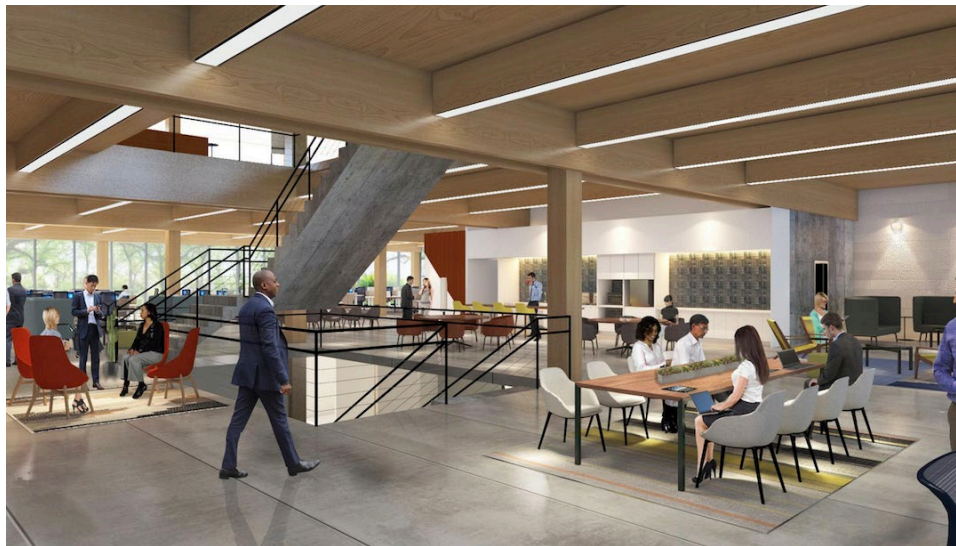
Located on approximately 350 acres in Bentonville, Ark., the new Walmart Home Office Campus will comprise more than 30 buildings, including office buildings, service buildings, parking decks, and amenity buildings.

The campus was designed to honor Walmart's heritage and will support the growth happening in the area by utilizing 1.7 million cubic feet of regionally-sourced lumber for the structures, making it the largest mass timber campus project in the United States.

SENT TO LSU AGCENTER/LOUISIANA FOREST PRODUCTS DEVELOPMENT CENTER - FOREST SECTOR / FORESTY PRODUCTS INTEREST GROUP



The buildings will all provide ample natural light and incorporate sustainable design strategies. These strategies include energy-efficient lighting and HVAC systems and over 10 acres of lakes for stormwater collection, which will be used for smart irrigation and rainwater reuse. The campus will also feature thousands of trees, shrubs, and grasses to provide habitat for wildlife, shade paths, bike trails, and to reconnect associates with nature. The project was designed and is being built with the goal of creating zero waste, operating with 100% renewable energy, and using sustainable resources and products.



Additionally, the campus will feature expanded food offerings, convenient parking, fitness and wellness options, and a childcare facility.

Gensler is the design architect for the office buildings and is the executive architect for the overall campus design. [Walter P Moore](#) is handling the civil engineering, traffic, ITS, and transportation planning, transportation engineering, and water resources engineering.

30 September 2021

SENT TO LSU AGCENTER/LOUISIANA FOREST PRODUCTS DEVELOPMENT CENTER - FOREST SECTOR / FORESTY PRODUCTS INTEREST GROUP



Richard P. Vlosky, Ph.D.
Director, Louisiana Forest Products Development Center
Crosby Land & Resources Endowed Professor of Forest Sector Business Development
Room 227, School of Renewable Natural Resources
Louisiana State University, Baton Rouge, LA 70803
Phone (office): (225) 578-4527; Fax: (225) 578-4251; Mobile Phone: (225) 223-1931
Web Site: www.LFPDC.lsu.edu



30 September 2021



SENT TO LSU AGCENTER/LOUISIANA FOREST PRODUCTS DEVELOPMENT CENTER - FOREST SECTOR / FORESTY PRODUCTS INTEREST GROUP

